



Jotne EPM Technology is a member of the Jotne Group, specializing in information technology. Since 1990 the company has developed database solutions to handle standards such as ISO 10303 - STEP, PLCS, etc. These are open specifications with public availability used by Aerospace, Space and Defence related industries to manage information about complex systems. Jotne has a staff of about 200 persons, and its IT products are used by clients all over the world including US DOD, MOD's, ESA and leading aerospace/defence/space contractors.

## Jotne EPM TECHNOLOGY

JOTNE EPM TECHNOLOGY AS  
Grenseveien 107 • PO Box 6629, Etterstad  
NO-0607 Oslo • Norway  
Tel: + 47 23 17 17 00  
Fax: +47 23 17 17 01  
E-mail: epmtech@jotne.com  
Web: www.jotne.com/epmtech

### Challenge:

Regulatory agencies require guaranteed longevity for a variety of digital data objects, (i.e. aircraft type design data, etc.). This type of data must be preserved and be accessible in a usable form during the operational life of the product. Failure to meet this requirement can lead to potential litigation costs associated with being unable to retrieve and use the data.

Your team will improve your processes by adopting these new standards for data exchange, sharing and archiving.

Long Term Archival & Retrieval of Digital Product & Technical Data

Data Preparation

Ingest

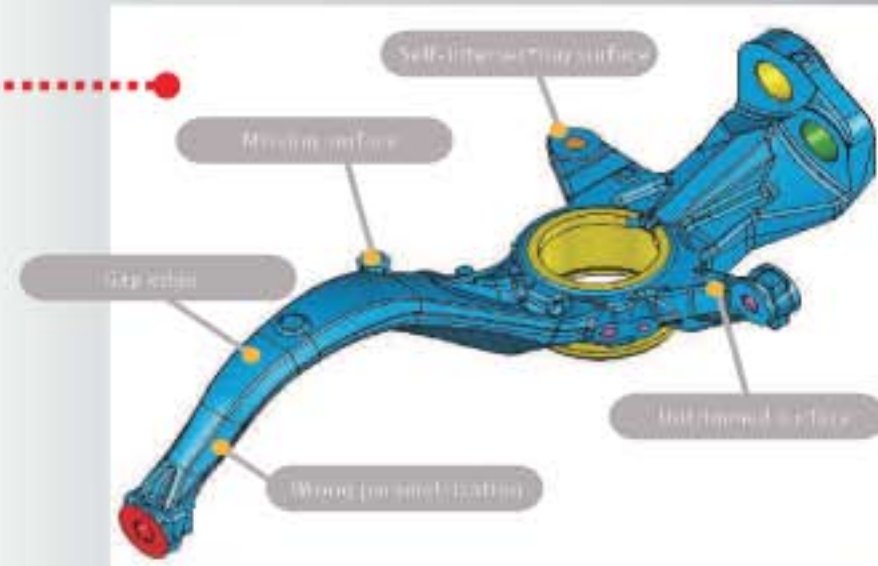
Archival Storage

Retrieval

Data Usage

Remove

### Perform data Validation and Verification



Data Preparation

Ingest

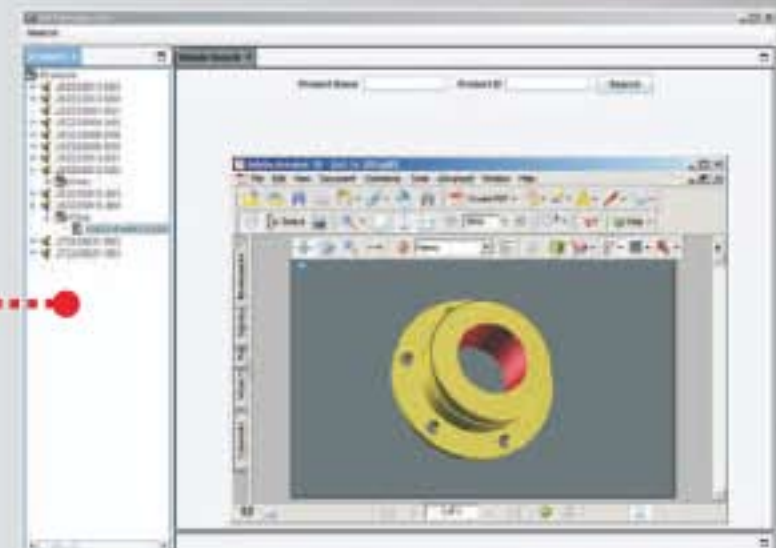
Archival Storage

Retrieval

Data Usage

Remove

### Share information with customers and partners



### DIGITAL ARCHIVES FOR YOUR 3D AND PLM DATA

Release, Distribute and Archive your most important asset, information about your systems.

### EDMmodelServer for 3D and PLM

### New Solutions to archive PLM and 3D Data

Most aerospace companies are using PLM and 3D systems since a number of years. However, how do they archive this data? Today companies have big problem to store and exchange PLM and 3D data and more importantly no solution for long-term data retention. The Jotne EPM Technology product EDMmodelServer for 3D and PLM data is the first one to deploy ISO 10303 (STEP), ISO 14721.4 (OAIS) and AECMA EN 9300 (LOTAR) in a harmonized way.

### Capabilities

ISO 10303 (STEP and PLCS Formats)  
ISO 14721.4 (OAIS)  
EN 9300-110 ASD  
Native CAD and PLM formats  
DBMS for applications

Quality Check (also VDA, AIAG, JAMA)  
3D Transvidia

Cad and Document viewers  
Adobe Acrobat 3D

Programming environments includes, VB, C++, C#, Java, XML, Express, Express-X etc.

